

GRID NORTH



PROJECT MANAGER

CHECK

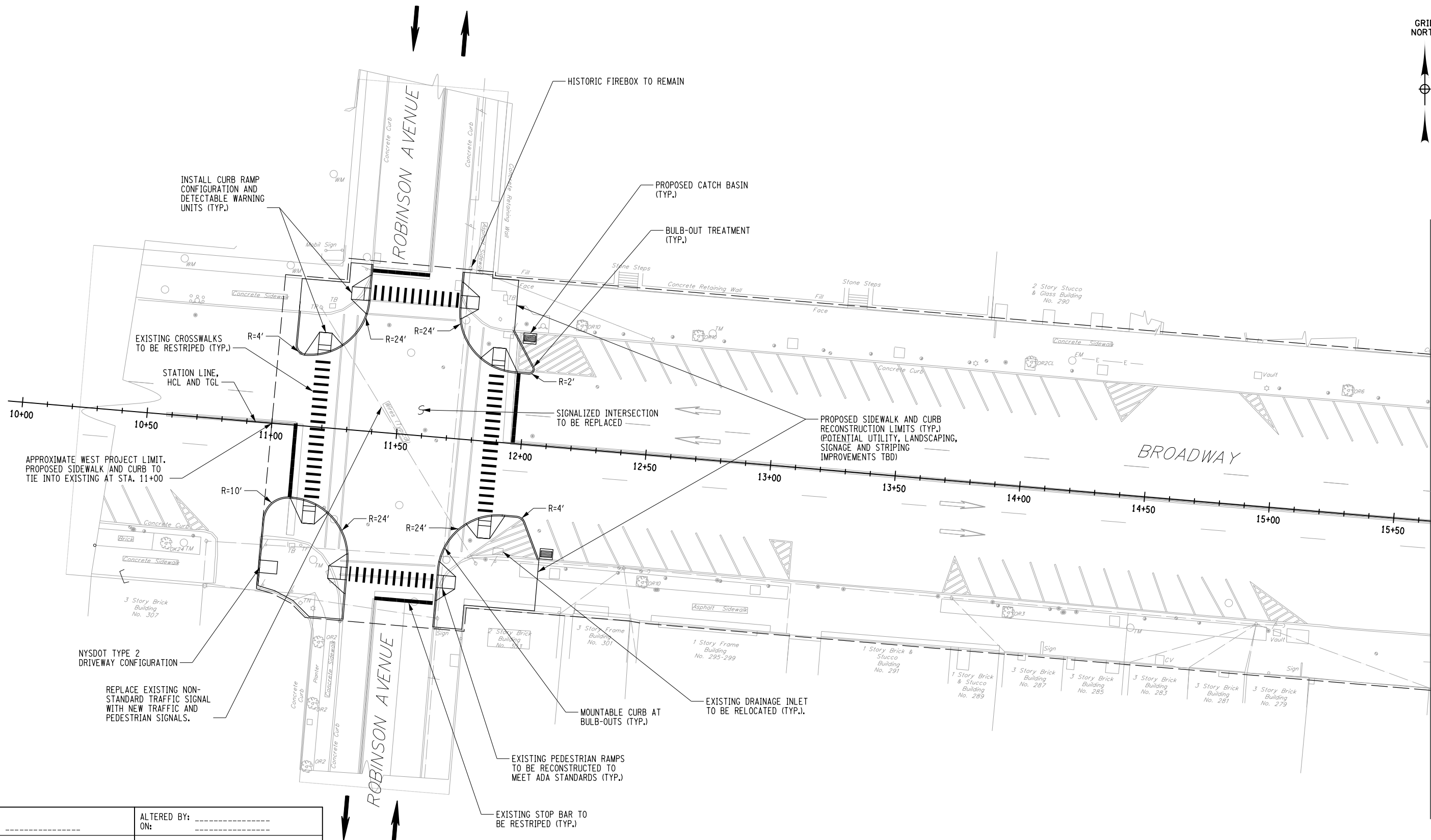
DRAFTING

CHECK

DESIGN

JOB MANAGER

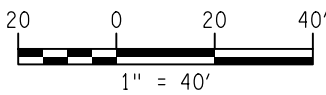
DESIGN SUPERVISOR



MATCHLINE - SEE DWG. NO. GNP-02

AFFIX SEAL: ON: _____

ALTERED BY: ON: _____



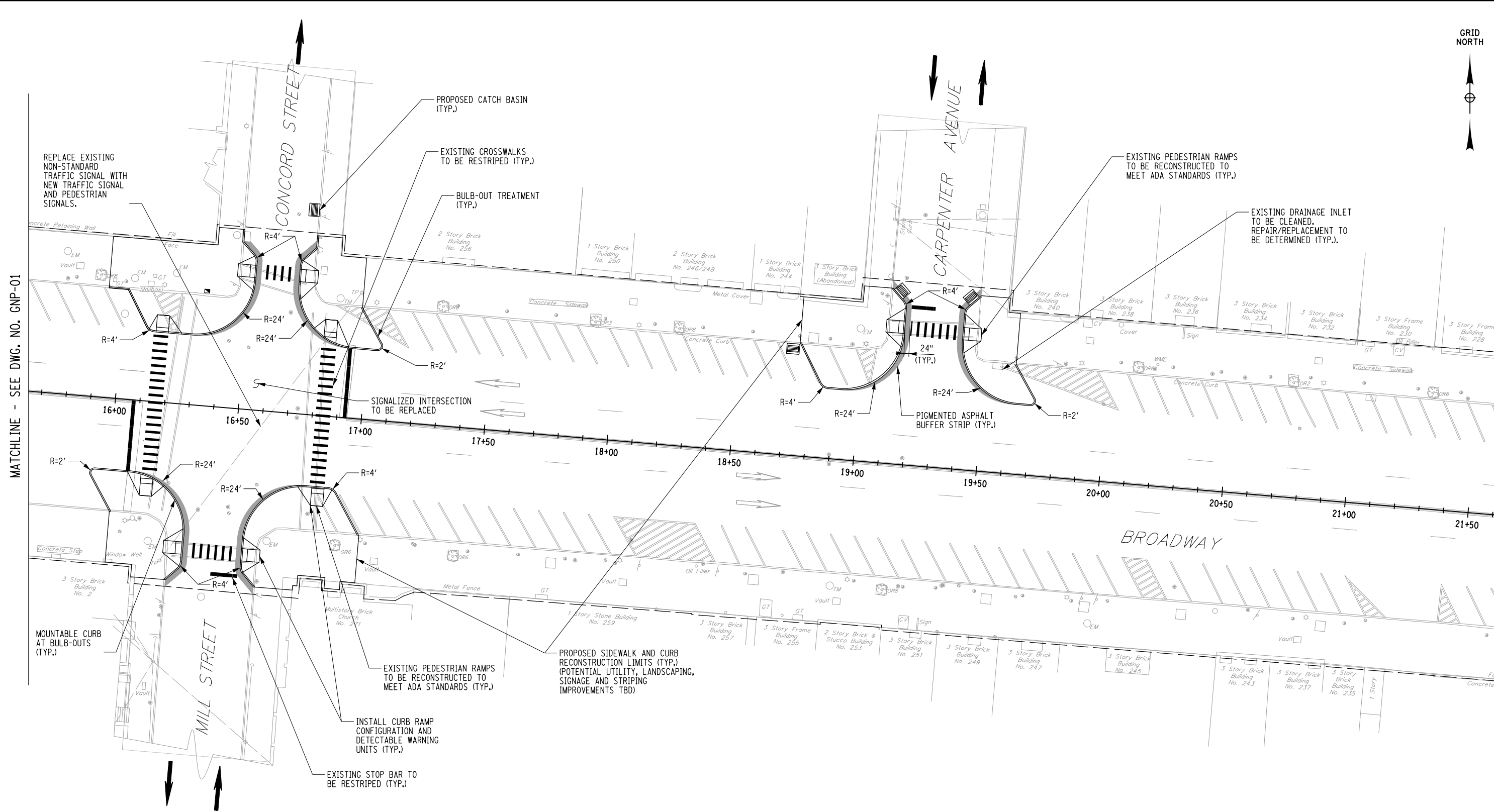
AS-BUILT REVISIONS DESCRIPTION OF ALTERATIONS:	

	PINS 8005.26 & 8758.75	BRIDGES	CULVERTS	ALL DIMENSIONS IN FT UNLESS OTHERWISE NOTED	CONTRACT NUMBER
COUNTY: ORANGE	REGION: 8			GENERAL PLAN - 01	DRAWING NO. GNP-01 SHEET NO.

IT IS A VIOLATION OF LAW FOR ANY PERSON, UNLESS THEY ARE ACTING UNDER THE DIRECTION OF A LICENSED PROFESSIONAL ENGINEER, ARCHITECT, LANDSCAPE ARCHITECT, OR LAND SURVEYOR, TO ALTER AN ITEM IN ANY WAY. IF AN ITEM BEARING THE STAMP OF A LICENSED PROFESSIONAL IS ALTERED, THE ALTERING ENGINEER, ARCHITECT, LANDSCAPE ARCHITECT, OR LAND SURVEYOR SHALL STAMP THE DOCUMENT AND INCLUDE THE NOTATION "ALTERED BY" FOLLOWED BY THEIR SIGNATURE, THE DATE OF SUCH ALTERATION, AND A SPECIFIC DESCRIPTION OF THE ALTERATION.



FILE NAME = DATE: 1/12/2021 6:21:26 PM
 DATE/TIME = USER = PLOTTED BY: USEG669651



MATCHLINE - SEE DWG. NO. GNP-01

MATCHLINE - SEE DWG. NO. GNP-03

PROJECT MANAGER

CHECK

DRAFTING

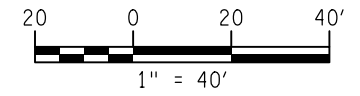
CHECK

DESIGN

JOB MANAGER

DESIGN SUPERVISOR

AFFIX SEAL: ON: _____
 ALTERED BY: ON: _____



AS-BUILT REVISIONS DESCRIPTION OF ALTERATIONS:	

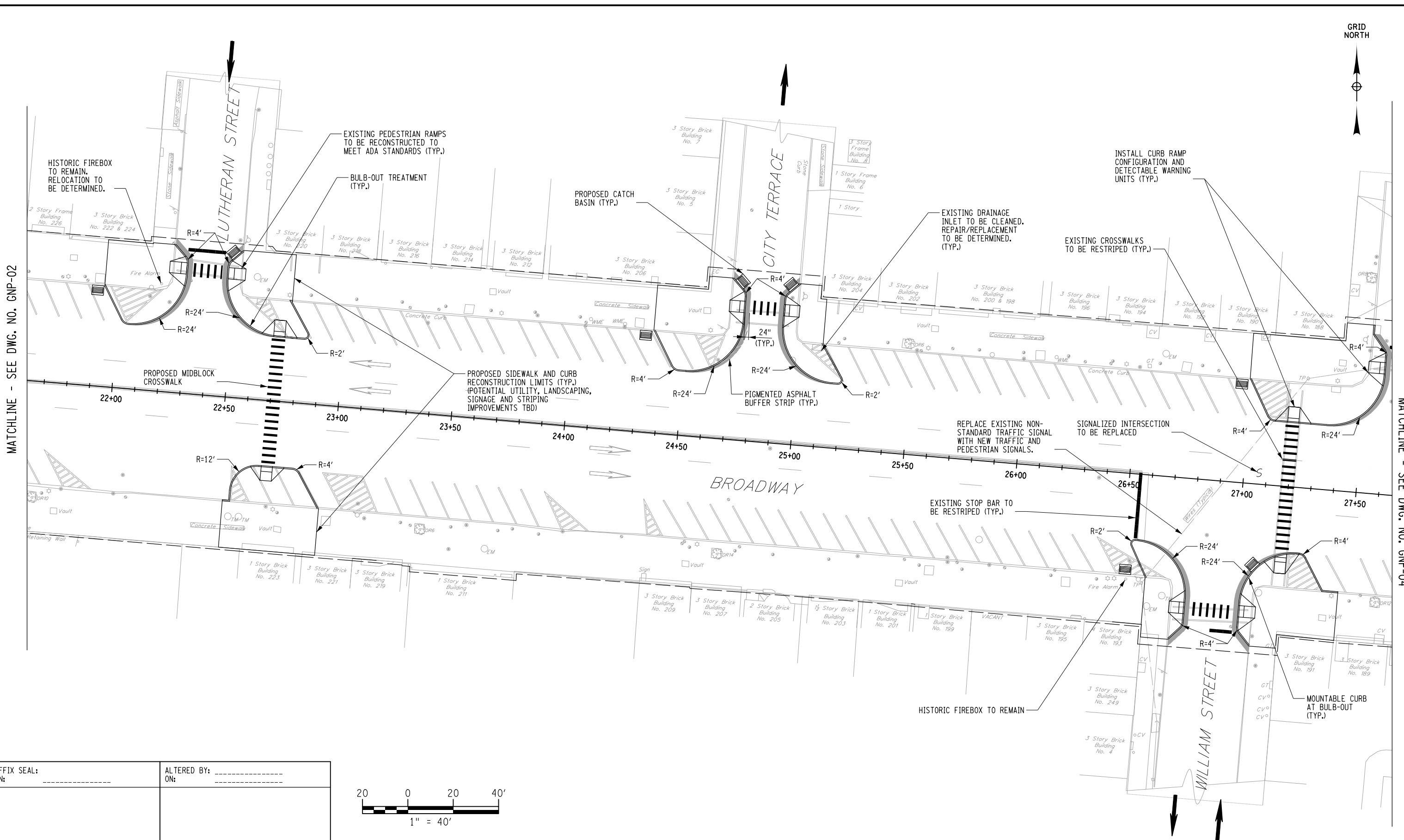
PINS 8005.26 & 8758.75	BRIDGES	CULVERTS	ALL DIMENSIONS IN FT UNLESS OTHERWISE NOTED	CONTRACT NUMBER
			GENERAL PLAN - 02	
COUNTY: ORANGE	REGION: 8			DRAWING NO. GNP-02 SHEET NO.

IT IS A VIOLATION OF LAW FOR ANY PERSON, UNLESS THEY ARE ACTING UNDER THE DIRECTION OF A LICENSED PROFESSIONAL ENGINEER, ARCHITECT, LANDSCAPE ARCHITECT, OR LAND SURVEYOR, TO ALTER AN ITEM IN ANY WAY. IF AN ITEM BEARING THE STAMP OF A LICENSED PROFESSIONAL IS ALTERED, THE ALTERING ENGINEER, ARCHITECT, LANDSCAPE ARCHITECT, OR LAND SURVEYOR SHALL STAMP THE DOCUMENT AND INCLUDE THE NOTATION "ALTERED BY" FOLLOWED BY THEIR SIGNATURE, THE DATE OF SUCH ALTERATION, AND A SPECIFIC DESCRIPTION OF THE ALTERATION.



FILE NAME = DATE: 1/12/2021 6:21:40 PM
 DATE/TIME = PLOTTED BY: USEG669651

GRID NORTH



MATCHLINE - SEE DWG. NO. GNP-02

MATCHLINE - SEE DWG. NO. GNP-04

PROJECT MANAGER

CHECK

DRAFTING

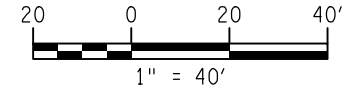
CHECK

DESIGN

JOB MANAGER

DESIGN SUPERVISOR

AFFIX SEAL: ON: _____
 ALTERED BY: ON: _____



AS-BUILT REVISIONS DESCRIPTION OF ALTERATIONS:	

PINS 8005.26 & 8758.75	BRIDGES	CULVERTS	ALL DIMENSIONS IN FT UNLESS OTHERWISE NOTED	CONTRACT NUMBER
			GENERAL PLAN - 03	
COUNTY: ORANGE	REGION: 8			DRAWING NO. GNP-03 SHEET NO.

IT IS A VIOLATION OF LAW FOR ANY PERSON, UNLESS THEY ARE ACTING UNDER THE DIRECTION OF A LICENSED PROFESSIONAL ENGINEER, ARCHITECT, LANDSCAPE ARCHITECT, OR LAND SURVEYOR, TO ALTER AN ITEM IN ANY WAY. IF AN ITEM BEARING THE STAMP OF A LICENSED PROFESSIONAL IS ALTERED, THE ALTERING ENGINEER, ARCHITECT, LANDSCAPE ARCHITECT, OR LAND SURVEYOR SHALL STAMP THE DOCUMENT AND INCLUDE THE NOTATION "ALTERED BY" FOLLOWED BY THEIR SIGNATURE, THE DATE OF SUCH ALTERATION, AND A SPECIFIC DESCRIPTION OF THE ALTERATION.



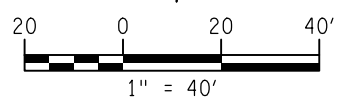
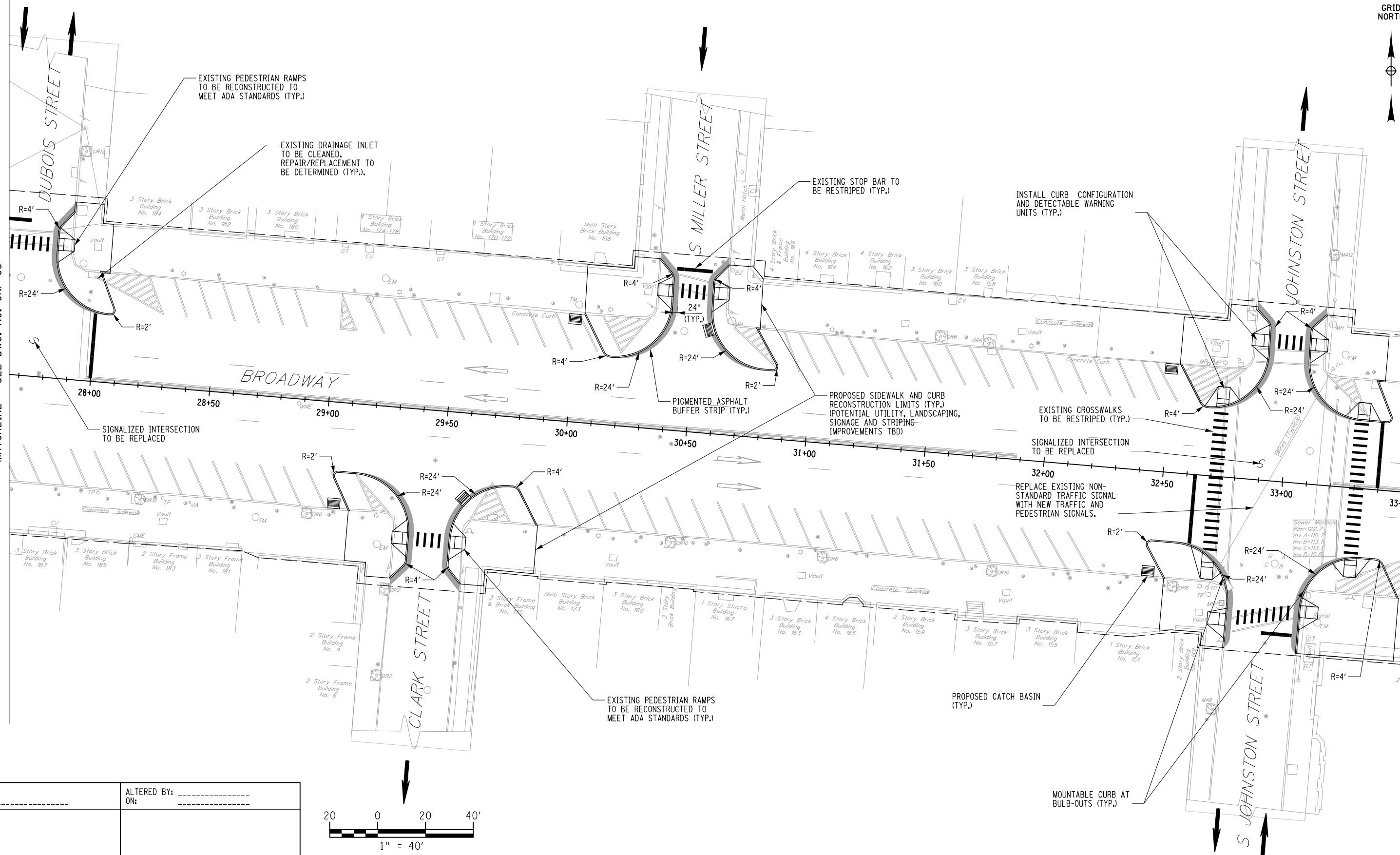
FILE NAME = DATE: 1/12/2021 6:21:55 PM
 DATE/TIME = PLOTTED BY: USEG669651



PROJECT MANAGER
 CHECK
 DRAFTING
 CHECK
 DESIGN
 JOB MANAGER
 DESIGN SUPERVISOR

MATCHLINE - SEE DWG. NO. GNP-03

MATCHLINE - SEE DWG. NO. GNP-05



AFFIX SEAL: ON: _____	ALTERED BY: _____ ON: _____
--------------------------	--------------------------------

AS-BUILT REVISIONS DESCRIPTION OF ALTERATIONS:

COUNTY: ORANGE	REGION: 8	PINS 8005.26 & 8758.75	BRIDGES	CULVERTS	ALL DIMENSIONS IN FT UNLESS OTHERWISE NOTED	CONTRACT NUMBER
GENERAL PLAN - 04						DRAWING NO. GNP-04 SHEET NO.

IT IS A VIOLATION OF LAW FOR ANY PERSON, UNLESS THEY ARE ACTING UNDER THE DIRECTION OF A LICENSED PROFESSIONAL ENGINEER, ARCHITECT, LANDSCAPE ARCHITECT, OR LAND SURVEYOR, TO ALTER AN ITEM IN ANY WAY. IF AN ITEM BEARING THE STAMP OF A LICENSED PROFESSIONAL IS ALTERED, THE ALTERING ENGINEER, ARCHITECT, LANDSCAPE ARCHITECT, OR LAND SURVEYOR SHALL STAMP THE DOCUMENT AND INCLUDE THE NOTATION "ALTERED BY" FOLLOWED BY THEIR SIGNATURE, THE DATE OF SUCH ALTERATION, AND A SPECIFIC DESCRIPTION OF THE ALTERATION.



FILE NAME = DATE: 1/12/2021 6:22:10 PM
 DATE/TIME = PLOTTED BY: USEG669651



PROJECT MANAGER

CHECK

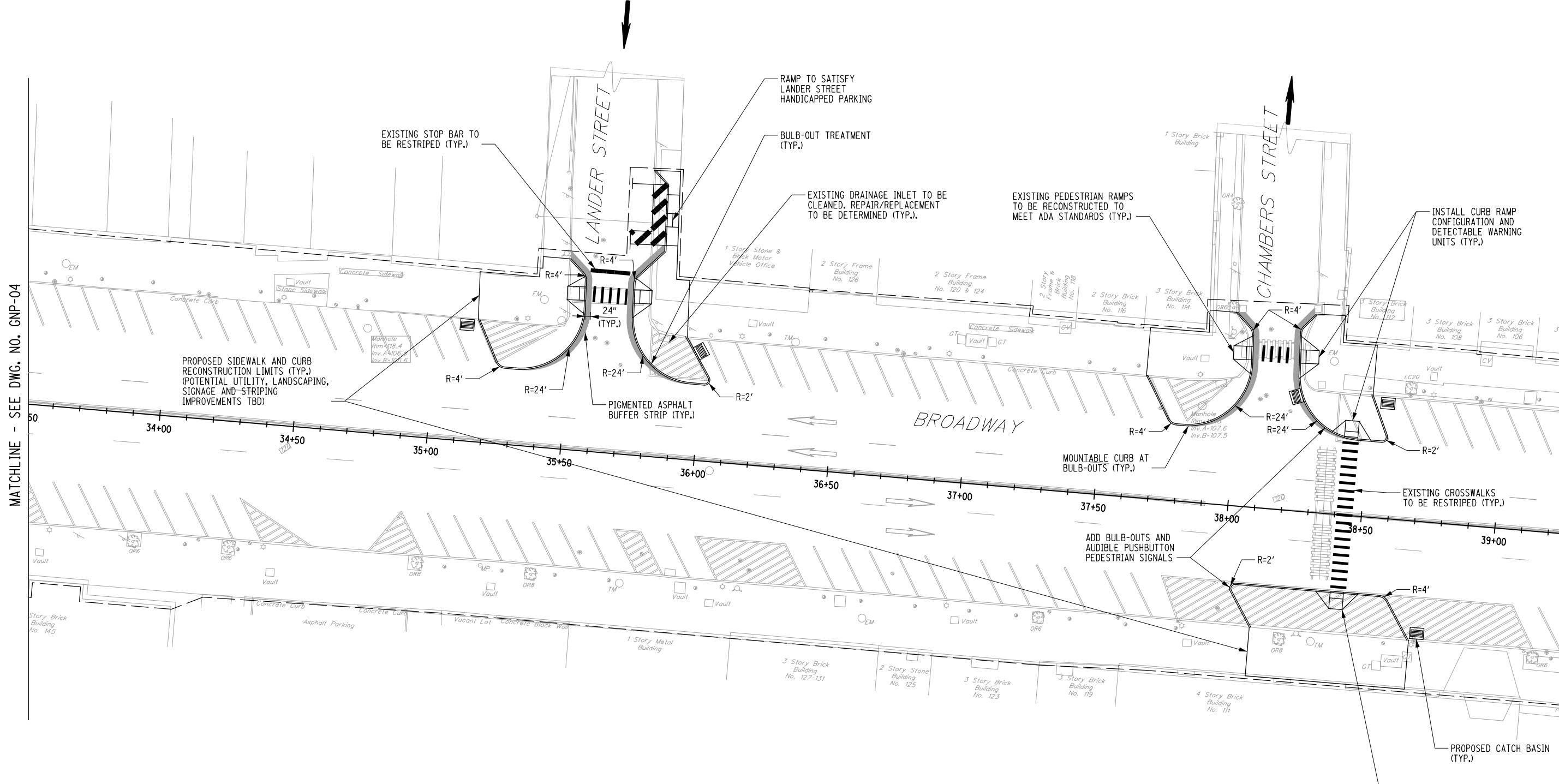
DRAFTING

CHECK

DESIGN

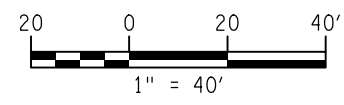
JOB MANAGER

DESIGN SUPERVISOR



MATCHLINE - SEE DWG. NO. GNP-04

MATCHLINE - SEE DWG. NO. GNP-06



AFFIX SEAL: ON: _____	ALTERED BY: ON: _____

AS-BUILT REVISIONS DESCRIPTION OF ALTERATIONS:	
COUNTY: ORANGE	REGION: 8

PINS 8005.26 & 8758.75	BRIDGES	CULVERTS	ALL DIMENSIONS IN FT UNLESS OTHERWISE NOTED	CONTRACT NUMBER
			GENERAL PLAN - 05	DRAWING NO. GNP-05 SHEET NO.

IT IS A VIOLATION OF LAW FOR ANY PERSON, UNLESS THEY ARE ACTING UNDER THE DIRECTION OF A LICENSED PROFESSIONAL ENGINEER, ARCHITECT, LANDSCAPE ARCHITECT, OR LAND SURVEYOR, TO ALTER AN ITEM IN ANY WAY. IF AN ITEM BEARING THE STAMP OF A LICENSED PROFESSIONAL IS ALTERED, THE ALTERING ENGINEER, ARCHITECT, LANDSCAPE ARCHITECT, OR LAND SURVEYOR SHALL STAMP THE DOCUMENT AND INCLUDE THE NOTATION "ALTERED BY" FOLLOWED BY THEIR SIGNATURE, THE DATE OF SUCH ALTERATION, AND A SPECIFIC DESCRIPTION OF THE ALTERATION.



FILE NAME = DATE: 1/12/2021 6:22:25 PM
DATE/TIME = USER = PLOTTED BY: USEG669651



PIN 8005.26 PIN 8758.75

MATCHLINE - SEE DWG. NO. GNP-05

PROJECT MANAGER

CHECK

DRAFTING

CHECK

DESIGN

JOB MANAGER

DESIGN SUPERVISOR

EXISTING STOP BAR TO BE RESTRIPE (TYP.)
INSTALL CURB RAMP CONFIGURATION AND DETECTABLE WARNING UNITS (TYP.)

BULB-OUT TREATMENT (TYP.)

PROPOSED CATCH BASIN (TYP.)

MOUNTABLE CURB AT BULB-OUTS (TYP.)

EXISTING PEDESTRIAN RAMPS TO BE RECONSTRUCTED TO MEET ADA STANDARDS (TYP.)

24" (TYP.)
PIGMENTED ASPHALT BUFFER STRIP (TYP.)

PROPOSED SIDEWALK AND CURB RECONSTRUCTION LIMITS (TYP.) (POTENTIAL UTILITY, LANDSCAPING, SIGNAGE AND STRIPING IMPROVEMENTS TBD)

SIGNALIZED INTERSECTION TO BE REPLACED (TYP.)

EXISTING CROSSWALKS TO BE RESTRIPE (TYP.)

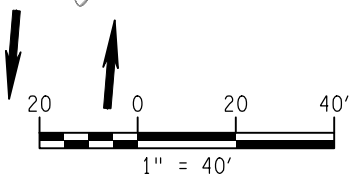
REPLACE EXISTING NON-STANDARD TRAFFIC SIGNAL WITH NEW TRAFFIC AND PEDESTRIAN SIGNALS.

APPROXIMATE EAST PROJECT LIMIT. PROPOSED SIDEWALK AND CURB TO TIE INTO EXISTING AT STA. 44+00

RAMP TO SATISFY GRAND STREET HANDICAPPED PARKING

REPLACE EXISTING NON-STANDARD TRAFFIC SIGNAL WITH NEW TRAFFIC AND PEDESTRIAN SIGNALS.

PEDESTRIAN IMPROVEMENTS AT LIBERTY STREET TO BE PERFORMED UNDER SEPERATE CONTRACT (BY OTHERS)



AFFIX SEAL: _____
ON: _____

ALTERED BY: _____
ON: _____

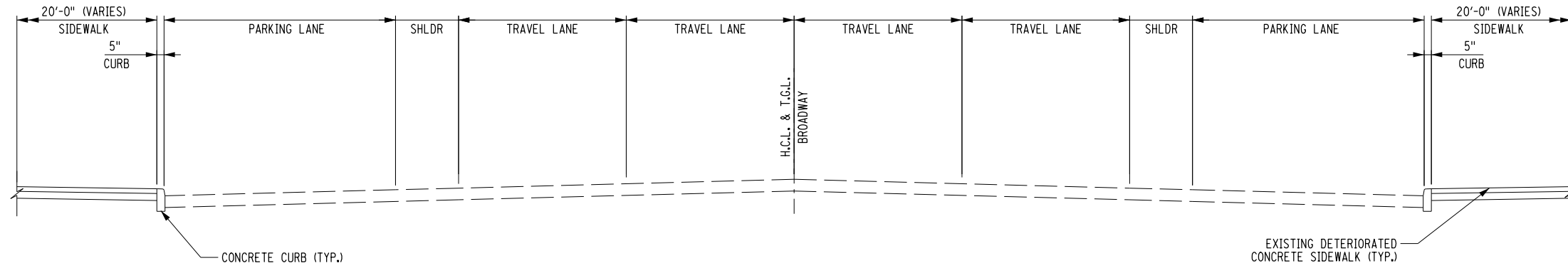
AS-BUILT REVISIONS DESCRIPTION OF ALTERATIONS:

COUNTY: ORANGE	REGION: 8	PINS 8005.26 & 8758.75	BRIDGES	CULVERTS	ALL DIMENSIONS IN FT UNLESS OTHERWISE NOTED	CONTRACT NUMBER
						GENERAL PLAN - 06
DRAWING NO. GNP-06						SHEET NO.

IT IS A VIOLATION OF LAW FOR ANY PERSON, UNLESS THEY ARE ACTING UNDER THE DIRECTION OF A LICENSED PROFESSIONAL ENGINEER, ARCHITECT, LANDSCAPE ARCHITECT, OR LAND SURVEYOR, TO ALTER AN ITEM IN ANY WAY. IF AN ITEM BEARING THE STAMP OF A LICENSED PROFESSIONAL IS ALTERED, THE ALTERING ENGINEER, ARCHITECT, LANDSCAPE ARCHITECT, OR LAND SURVEYOR SHALL STAMP THE DOCUMENT AND INCLUDE THE NOTATION "ALTERED BY" FOLLOWED BY THEIR SIGNATURE, THE DATE OF SUCH ALTERATION, AND A SPECIFIC DESCRIPTION OF THE ALTERATION.

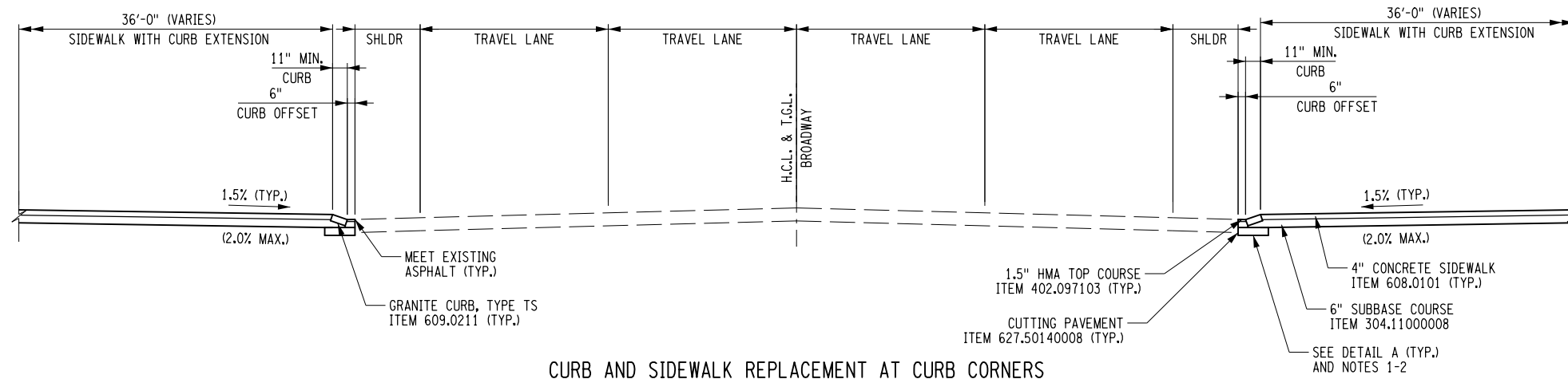


FILE NAME = DATE: 1/12/2021 6:22:39 PM
DATE/TIME = PLOTTED BY: USEG669651



EXISTING CURB AND SIDEWALK

BROADWAY
 STA. XX+XX TO STA. XX+XX
 STA. XX+XX TO STA. XX+XX

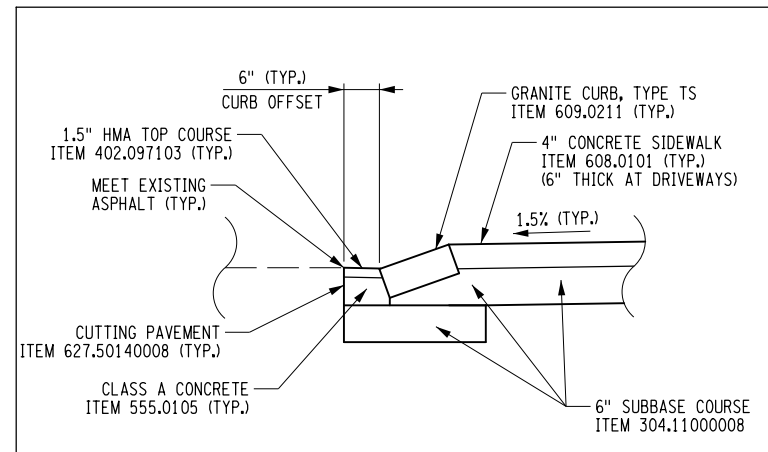


CURB AND SIDEWALK REPLACEMENT AT CURB CORNERS

BROADWAY
 STA. XX+XX TO STA. XX+XX
 STA. XX+XX TO STA. XX+XX

NOTES:

1. SEE TABLE OF CURB FOR LIMITS OF CURB REPLACEMENT ON DWG NO. XX-XX.
2. SEE DETAIL A FOR NEW CURB DETAIL.
3. SEE DETAIL B FOR CONSTRUCTION AT DRIVEWAY ENTRANCES.



DETAIL A - SIDEWALK AND CURB REPLACEMENT

AFFIX SEAL: _____
 ON: _____

ALTERED BY: _____
 ON: _____

AS-BUILT REVISIONS DESCRIPTION OF ALTERATIONS: _____ _____ _____	COUNTY: ORANGE	REGION: 8	PINS 8005.26 & 8758.75	BRIDGES	CULVERTS	ALL DIMENSIONS IN FT UNLESS OTHERWISE NOTED	CONTRACT NUMBER
						TYPICAL SECTIONS - 01	DRAWING NO. TYP-01
							SHEET NO.

IT IS A VIOLATION OF LAW FOR ANY PERSON, UNLESS THEY ARE ACTING UNDER THE DIRECTION OF A LICENSED PROFESSIONAL ENGINEER, ARCHITECT, LANDSCAPE ARCHITECT, OR LAND SURVEYOR, TO ALTER AN ITEM IN ANY WAY. IF AN ITEM BEARING THE STAMP OF A LICENSED PROFESSIONAL IS ALTERED, THE ALTERING ENGINEER, ARCHITECT, LANDSCAPE ARCHITECT, OR LAND SURVEYOR SHALL STAMP THE DOCUMENT AND INCLUDE THE NOTATION "ALTERED BY" FOLLOWED BY THEIR SIGNATURE, THE DATE OF SUCH ALTERATION, AND A SPECIFIC DESCRIPTION OF THE ALTERATION.



PROJECT MANAGER

CHECK

DRAFTING

CHECK

DESIGN

JOB MANAGER

DESIGN SUPERVISOR

FILE NAME = DATE: 1/12/2021 6:22:51 PM
 DATE/TIME = USER = PLOTTED BY: USEG669651