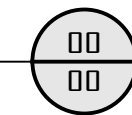
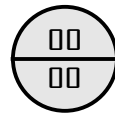


NYS DOT ITEM NO. 623.01. SCREENED GRAVEL 18. MINIMUM DEPTH OF ONE (1) INCH AND SWEEP INTO THE PAVER JOINTS.

HANOVER ARCHITECTURAL PRODUCTS PERMEABLE FOUR (4) INCH BY EIGHT (8) INCH PAVER. COLOR SHALL BE QUARRY RED, WHICH IS SPECIAL ORDER. PAVER PATTERN SHALL BE LAID IN A RUNNING BOND PATTERN PERPENDICULAR TO THE ROAD AND SIDEWALK.

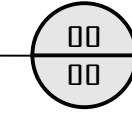
NYS DOT ITEM NO. 304.II, TYPE 1 SUBBASE, AND ITEM NO. 304.I2, TYPE 2 SUBBASE, STONE MATRIX WITH NO FINES. MINIMUM DEPTH OF FOUR (4) INCHES.

CONCRETE, CONCRETE - DECORATIVE, BLUESTONE, OR CONCRETE PAVER SIDEWALK.



ASPHALT PAVING

CORNELL UNIVERSITY (CU) STRUCTURAL SOIL, STONE/SOIL MATRIX. MINIMUM DEPTH OF EIGHTEEN (18) INCHES.



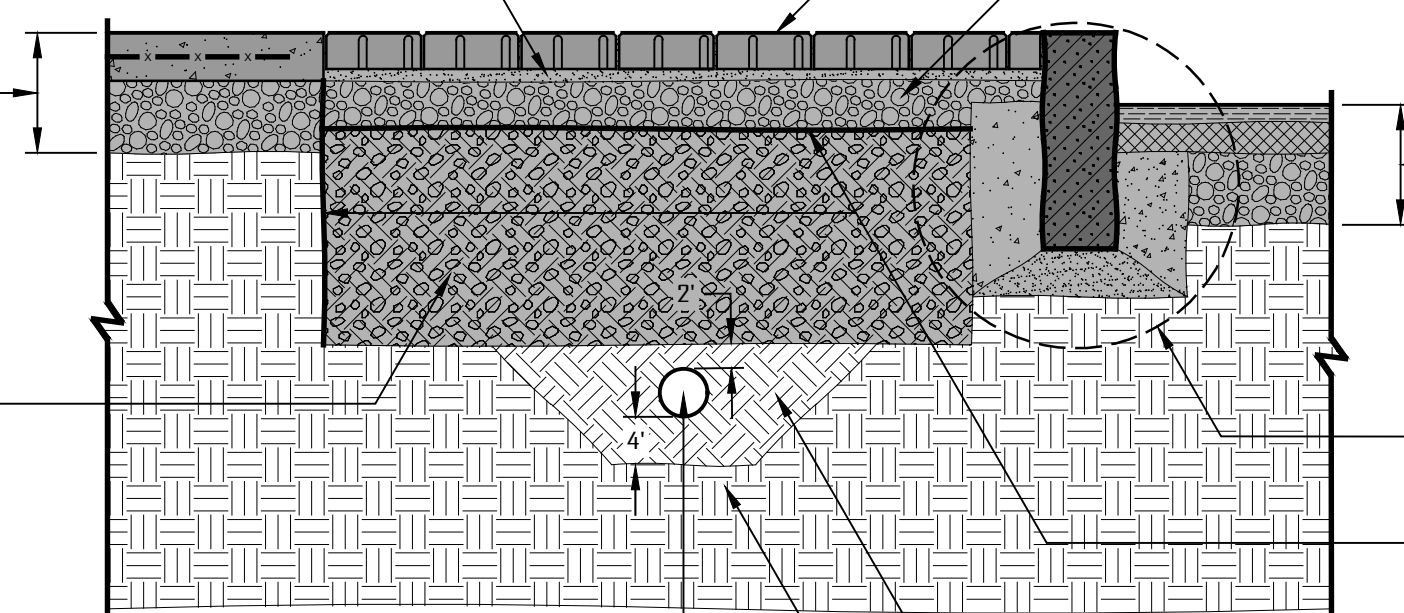
RESET BLUESTONE, GRANITE, OR CONCRETE CURB

NYS DOT ITEM NO. 207.21 GEOTEXTILE SEPERATION, MIRAFI 500X OR APPROVED EQUAL.

NYS DOT ITEM NO. 605.1001 UNDERDRAIN FILTER, TYPE 2. DO NOT INSTALL THIS ITEM IN INSTANCES DRAINAGE IMPROVEMENTS ARE NOT PROPOSED.

NYS DOT ITEM NO. 605.1001 UNDERDRAIN FILTER, TYPE 2. DO NOT INSTALL THIS ITEM IN INSTANCES DRAINAGE IMPROVEMENTS ARE NOT PROPOSED.

FIRM AND UNYIELDING SUBBASE, COMPACT AS NEEDED TO NINETY-FIVE (95) PERCENT PROCTOR DENSITY.



PERMEABLE PAVERS

CITY OF NEWBURGH STANDARD DETAIL, APPROVED MARCH 30, 2022

3/4" = 1'-0"