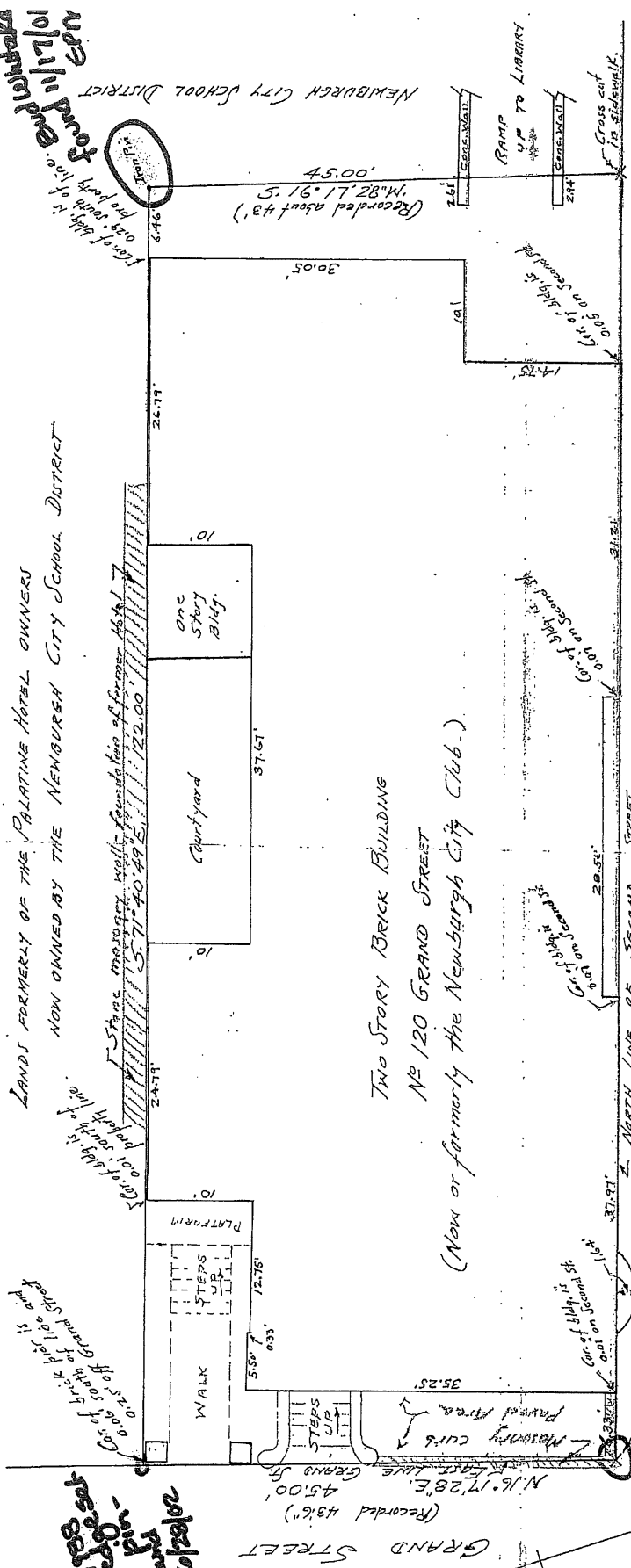


Found in 1910
found in 1910
found in 1910
found in 1910
found in 1910

LANDS FORMERLY OF THE PALATINE HOTEL OWNERS
NOW OWNED BY THE NEWBURGH CITY SCHOOL DISTRICT

Face of blk. is 0.25' north of line.
Face of blk. is 0.25' south of line.
Face of brick blk. is 0.25' off Grand Street
0.25' south of 110' and

1188
1188
1188
1188
1188



NEWBURGH CITY SCHOOL DISTRICT
45.00'
5.16.17.28'W.
(Recorded about 43')

TWO STORY BRICK BUILDING
N^o 120 GRAND STREET
(Now or formerly the Newburgh City Club.)

SECOND STREET
M^o 64 OF 111 N
0022

— PLOT OF SURVEY OF N^o 120 GRAND STREET, NEWBURGH, NY —
— OWNED BY BRIAN D. THOMPSON —

— SCALE 1/4" = 10' —

Surveyed in accordance with old surveys, adjoining property survey and deed, and to possession lines as shown. Certified to The Bank of New York and to the American Title Insurance Co. May 31, 1971.
Geo. McCorwin, Lic. L.S. # 26352 Geo. W. Corwin

3-1-0